

Quick Start Instructions

OR - Step by step video instructions available at WWW.DDMarine.us/TerminatorIIvideo.html

Important ! Apply white teflon tape any place you see "T" on a photo, or you will damage your skimmer. Wrap it in the direction of the thread as shown to the right.



ALL CONNECTIONS ARE HAND TIGHT, DO NOT USE TOOLS OR OVER TIGHTEN. THREADS SHOULD STILL BE SEEN IN MOST JOINTS

STEP 1 - Thread on elbow, remember the "T" means use the white teflon tape here.



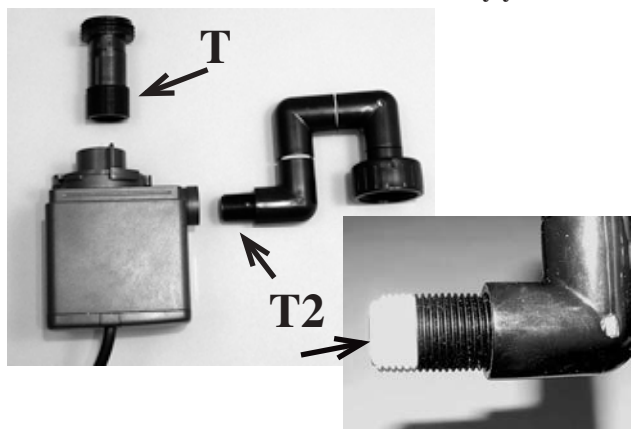
STEP 2 - Thread venturi into elbow. Hold elbow with one hand and tighten with other.



STEP 3 - Thread intake Tee onto body.



STEP 4 - Thread pump connections to the pump as shown. On T2 apply the teflon only to the end of the thread as shown, use 6 or 7 wraps at "T2".



STEP 5 - Attach pump to body using lock ring. Make certain rubber "O" ring is in place in the union. Do not tighten all the way yet.

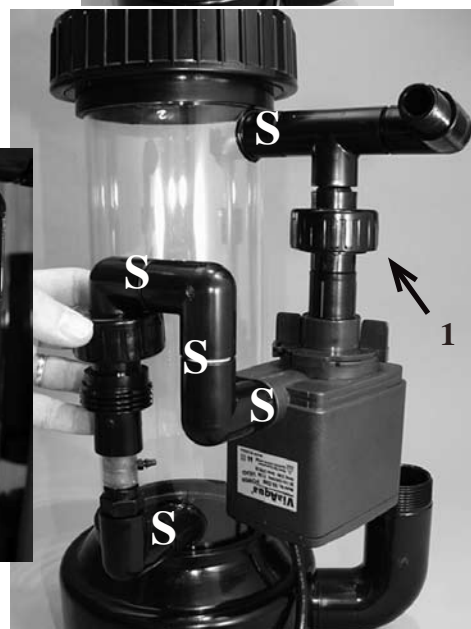


STEP 6 - Rotate the pump to the position shown.



STEP 7 - IMPORTANT!! Read this entire section before proceeding !!

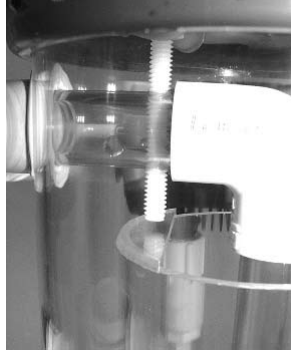
Hold lock ring up as shown to see that the union halves line up and are flat to each other. If not, you can swivel any joint marked "S" (see far right photo) to align the union. **LOOSEN UNION "1", SO THE PUMP IS FREE TO MOVE. USE CAUTION NOT TO TWIST THE POINTS WHERE THE PIPES CONNECT TO THE CLEAR BODY.** It is ok for the pump ,or venturi to be at an angle, this does not effect the units function. **DO NOT PULL** the joint together using the lock ring. The joint should be touching and flat (see photo to the right) before you use the lock ring. Check that the rubber "O" ring is in place.



STEP 8 - Remove the skimmer top and insert the clear intake pipe. The pipe presses into the hole in the side of the body.



STEP 9 - Turn screw down until it just touches the lip on the core as shown.



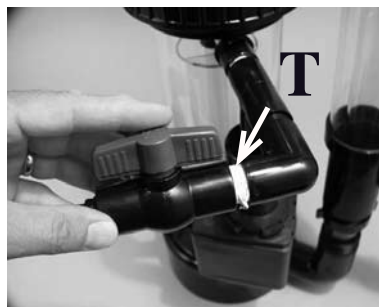
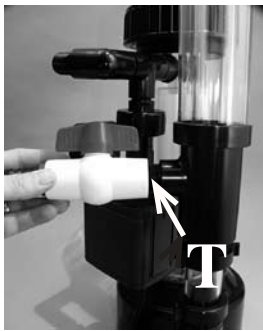
STEP 10 - Place top back on skimmer and tighten lock ring. Make certain "O" ring is in place



Step 11 - Place side chamber into body as shown. Hand tighten lower lock ring.



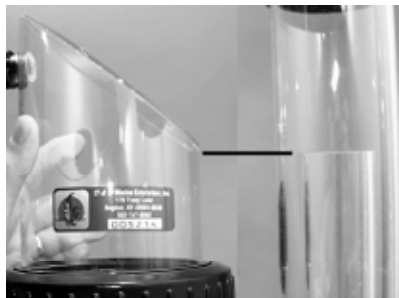
Step 12 - Thread outlet valve onto side chamber, and inlet valve onto body.



Step 13 - Attach waste elbow to the skimmer & the air intake tube to the venturi



Step 14 - Loosen the lower lock ring and set inner tube as shown, retighten lock ring.



Final Step - Connect a 250 GPH powerhead (not included), place it in the sump and connect to the small valve in step 12. Connect hose or pipe to the large valve in step 12 and place it in the sump. Keep this hose above water at all times. Use a length of hose to connect the waste port (first image step 13) into a waste container. (1 gallon milk jug works well). Keep this hose above water at all times.

Start Up

1. Turn on powerhead in the sump.
2. Once the body fills, turn on the drive pump (mounted on skimmer).
3. Make certain the needle valve on the air intake hose (step 13) is fully open.
4. Close the outlet valve (the large valve in step 12) until the side chamber is 1/3 filled.

For fine tuning adjustments, read "Start up" in the full instruction manual.

Please always check our web site for any instruction updates.